

NCA SUDAN



NORWEGIAN CHURCH AID
actalliance

SUDAN SITUATION UPDATE



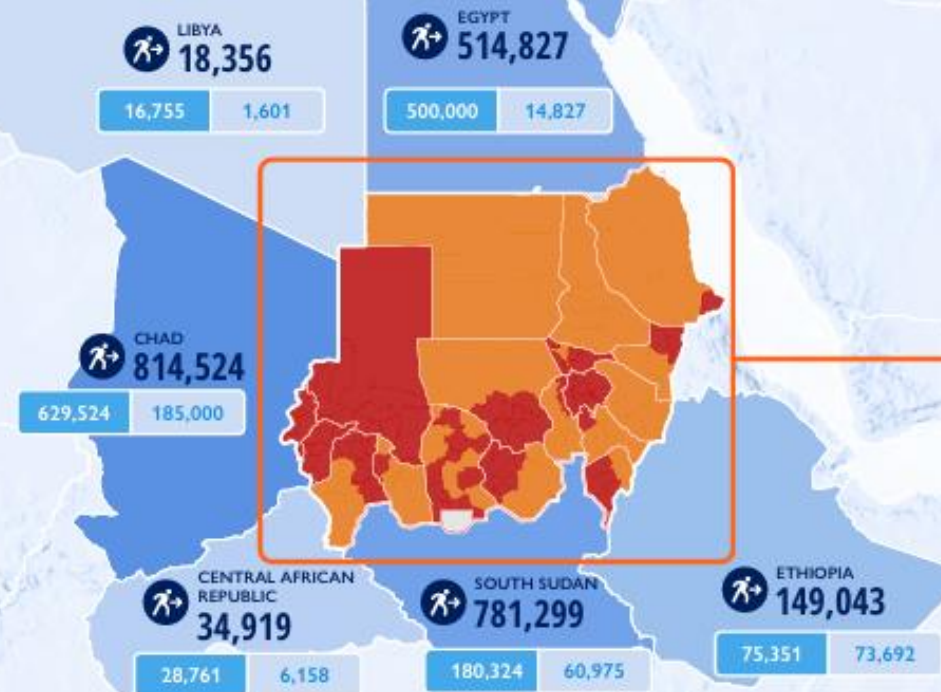
SUDAN SITUATION UPDATE



MASSIVE NEEDS

- Every second Sudanese person will require humanitarian assistance
- June 2024, more than 25 million people were facing acute hunger
- 755,000 on the brink of famine
- 3.5 million children will suffer from acute malnutrition this year
- 19 million school-aged children losing out on their education
- 6.7 million people at risk of GBV
- 19 million people need basic WASH
- Economy to shrink by more than 18% in 2024
- 12 states are facing multiple disease outbreaks, including cholera, malaria and measles
- HRP about 32% funded

DISPLACEMENT OVERVIEW WITH INTEGRATED PHASE CLASSIFICATION (IPC) LEVELS



COUNTRY NAME

TOTAL ARRIVALS

SYNERGISE WITH SUDANISE

Min Max

IPC Food Security Levels

Stressed Crisis Emergency

Famine affected area

Risk of famine

Refugees

IDPs/other settlements classification

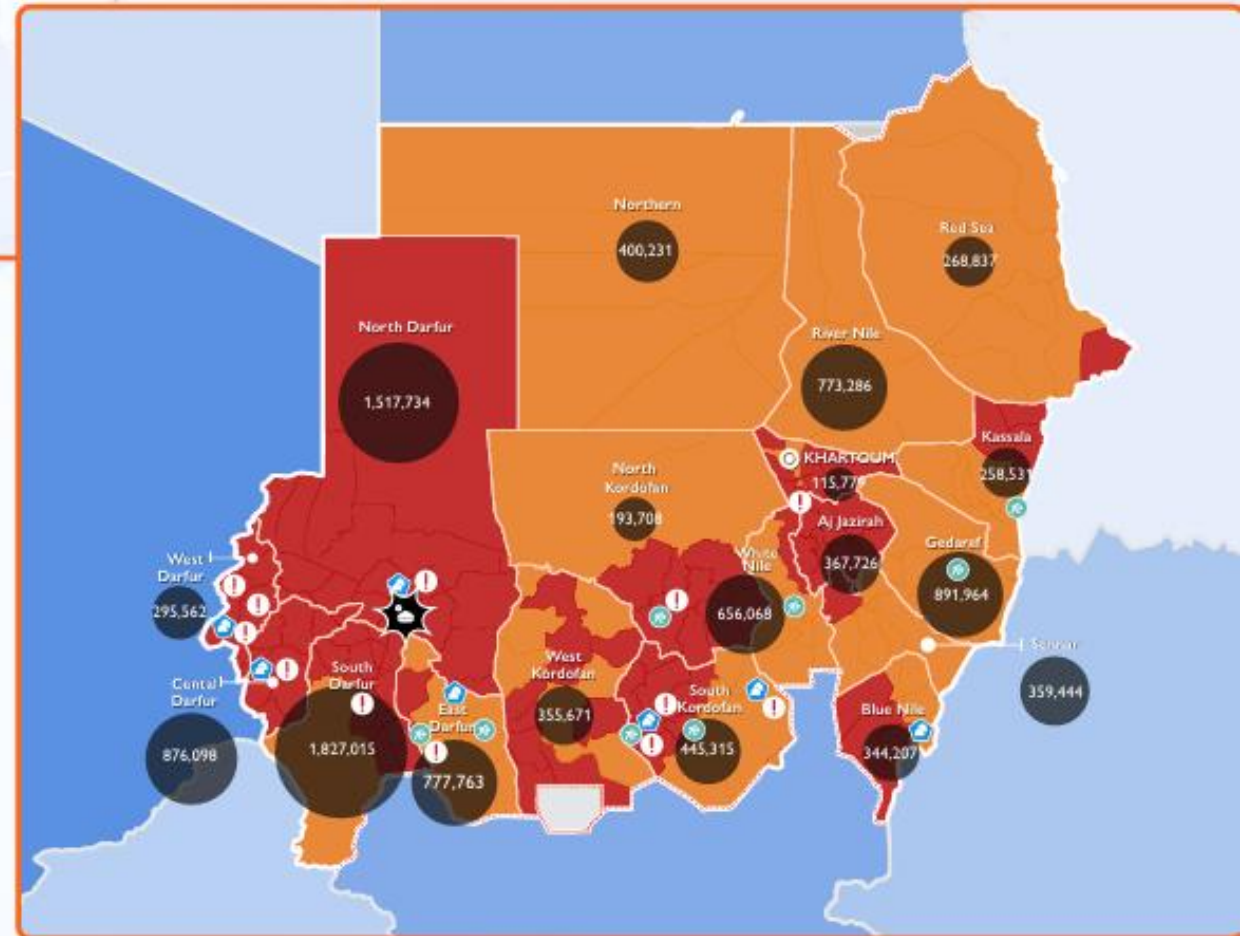
Total Number of IDPs

1000,000

KEY FIGURES



- 10.7 million internally displaced within Sudan
- 2.3 million have crossed borders into neighbouring countries
- 6,688 internally displaced people
- 38,533 cross border movements



This map is for illustration purposes only. Names and boundaries on this map do not imply official endorsement or acceptance by IOM.

ENORMOUS CHALLENGES

- Safety, security, and access
- Logistics
- BAI, securitization of administration
- Telecommunications
- Banking, access to cash
- Crime
- Inflation and currency devaluation



NCA SUDAN UPDATES

NCA SUDAN UPDATES



CLARITY OF PURPOSE, AND OPPORTUNITY

- Adjust structure and change modality of working
- Focus on sustainability
 - Sustainability of impact, not presence
 - Investing in civil society is investing in democratic future of Sudan
- Re-consolidate and establish, smaller, stronger base
- Invest in partners, rather than focus on rebuilding assets
- Shift in geographical presence
 - Port Sudan
 - Eastern corridor
 - When accessible: Khartoum and Darfur

RESPONSE

- AREAS:

- Gedaref
- White Nile
- Central Darfur
- Khartoum

- DONORS:

- ACT Appeal
- NCA Own Funds
- MFA Flexible Funds
- RNE
- UNICEF
- WFP/KfW

- THEMATIC AREAS:

- MPC
- Emergency Agriculture
- WASH
- GBVie



CSEE
RESPONSE
HIGHLIGHTS

More than 18,000 people received emergency MPC, seeds, farming tools, and agriculture training.



WASH RESPONSE HIGHLIGHTS

47,788 people received WASH services including clean water, sanitation and hygiene kits, facilities such as latrines, and knowledge.





GBV RESPONSE HIGHLIGHTS

18,631 individuals supported through case management, psychosocial support, referrals, dignity kits, capacity building initiatives, and outreaches.

ASRH RESPONSE HIGHLIGHTS

13,672 adolescents in refugee camps were reached in 2023 with sexual and reproductive health behavior-changing activities.



Over 100,000
beneficiaries
targeted in 2024



Key targets in 2024

- 5,100 small scale farmers households (30,600 people) supported with tools, seeds, and demonstrations as a famine mitigation measure.
- 3,300 IDP and host community households (19,800 people) with multi-purpose cash assistance in White Nile.
- 15,500 refugees and IDPs targeted with WASH and multi-purpose cash activities in Gedaref.
- 22,000 refugees, IDPs, and host communities targeted with integrated WASH, GBV, and ASRH activities in Gedaref and White Nile.

Over 100,000
beneficiaries
targeted in 2024



Key targets in 2024

- Over 20,000 women, youth, and rural households to be reached with Social Cohesion activities in Kordofan and White Nile states.
- 13,000 women, men, boys, and girls targeted with integrated WASH, GBV/SRH, and economic empowerment activities in Kordofan and White Nile states.
- 12,500 people (including small scale farmers, women, girls, and boys) in Central Darfur and Gedaref targeted with funding from other sources.

“We are not giving up, because the people of Sudan have not given up”

